

LIGHT ENVIRONMENT PHOTO LAMP

USER MANUAL

Dear User, thank you sincerely for purchasing our fill light product. To ensure you can fully experience the excellent performance of this product and guarantee safety and convenience during use, please be sure to read the following user manual carefully.

PRODUCT OVERVIEW

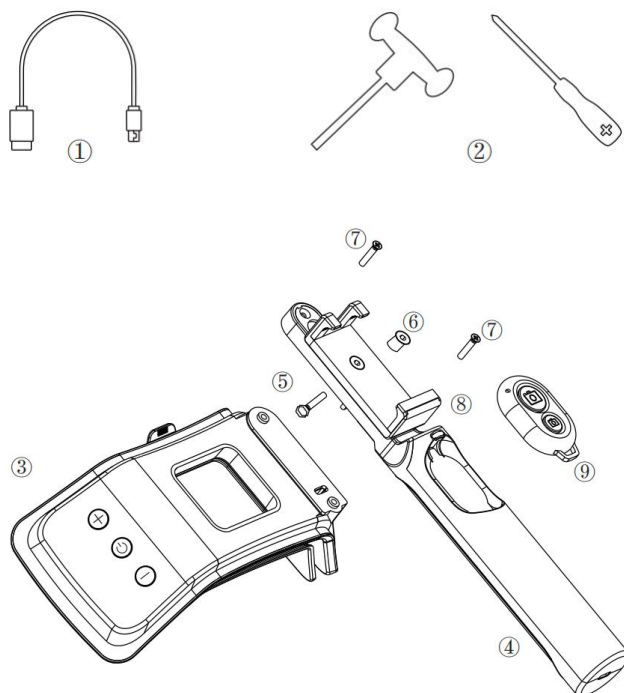
The Light Environment Photo Lamp, a portable lighting device with an exquisite design, is widely applicable to various scenarios such as dental photography, general photography, video recording, makeup, live streaming, and reading. It features an LED light source as its core, providing uniform and soft light to effectively enhance photography results or improve lighting quality in work environments.

- (Important Note: The Light Environment Photo Lamp is an auxiliary lighting tool for photography and should be operated with caution. Any issues caused by improper personal use are not covered under the warranty. Users must inform patients not to look directly at the light source (LED light); if necessary, protective glasses should be worn.)

PRODUCT COMPONENTS

- ① 1 TYPE-C data cable
- ② 1 hex wrench (for adjusting the phone card slot 6, 7) and 1 Phillips screwdriver
- ③ Light Environment Photo Lamp main body (for mobile dental photography stand)
- ④ Light Environment Photo Lamp handle (for mobile dental photography stand)
- ⑤ 1 hex screw
- ⑥ 1 hex long nut
- ⑦ 2 long screws
- ⑧ 1 phone card slot holder
- ⑨ 1 wireless Bluetooth remote control

- ⑩ 1 user manual

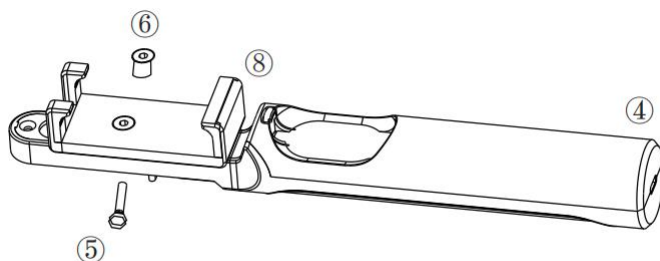


PRODUCT ASSEMBLY

2-1 First Step

First, fix the ⑧ phone card slot holder to the ④ handle using the ⑤ hex screw and ⑥ hex long nut.

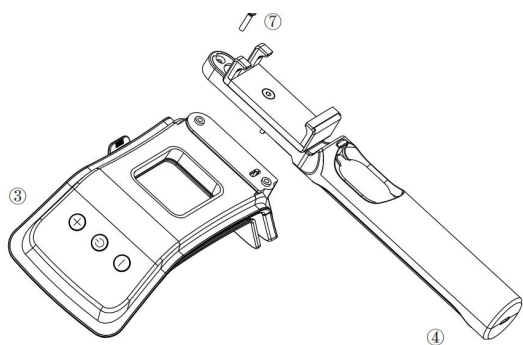
*(Note: Do not tighten the screw yet.)



2-2 Second Step

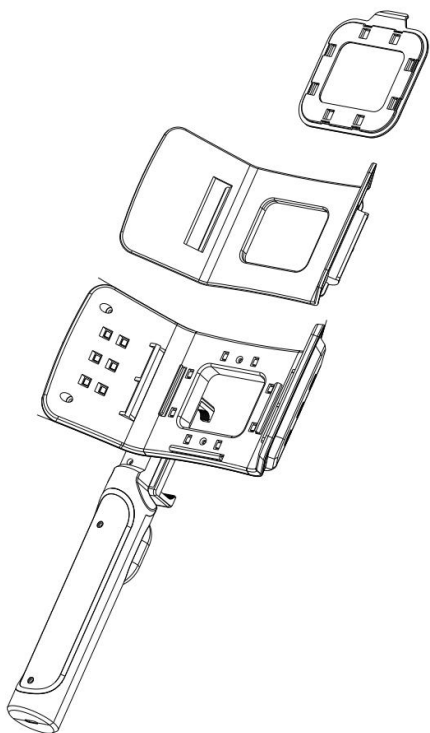
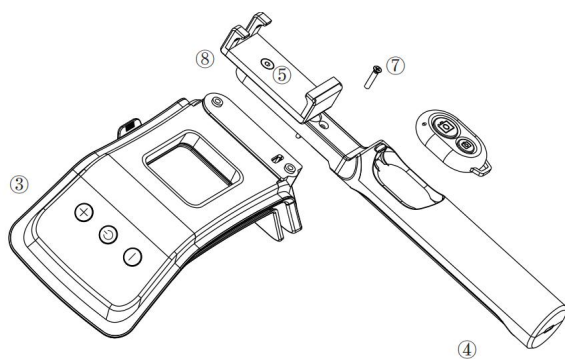
Fix the ④ handle to the ③ lamp body, and first screw on the first ⑦ long screw.

*(Note: Do not tighten the screw yet.)



2-3 Third Step

Slide the ⑧ phone card slot holder upward to expose the second screw hole, then fasten the second ⑦ long screw. After adjusting the phone position in the phone card slot holder, you can tighten the ⑤ hex screw in the phone card slot holder from the first step.



PRODUCT CHARACTERISTICS

- The Light Environment Photo Lamp (mobile dental photography stand lamp) is a product operated via LED lights.
- High-efficiency LED light source, durable in use.
- Multi-level brightness adjustment function to meet diverse lighting needs.
- Adjustable color temperature to adapt to different shooting environments.
- Compact and portable design, easy to install.
- Energy-saving and environmentally friendly, with low energy consumption during operation.

OPERATIONS GUIDE

1. Before using for the first time, insert the TYPE-C cable into the TYPE-C port at the bottom of the handle, and insert the other end into a charger plug to connect to the power supply. When charging, the charging indicator light at the bottom of the handle will turn on; if the lamp body flashes quickly, it indicates low battery; a green light means charging is complete. The full charging time of this product is approximately 2.5 hours, and it can work for about 20 hours on a full charge.

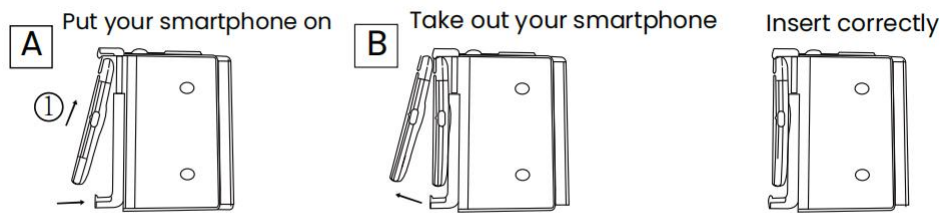
2. Install the phone in the phone card slot. This phone card slot can hold smartphones with a width of 55MM-85MM, suitable for smartphones of multiple brands. By loosening the ⑤ hex screw of the phone holder, you can slide and adjust the height required for the smartphone to shoot, so that the lens is at the middle position of the lamp body's window.

3. The LED lights are located on the front of the lamp body: one group of 8 middle LED lights and two groups of 6 side LED lights. The buttons on the left side of the lamp body are in the order of [Button 1], [Button 2], [Button 3] (Note: The original document did not specify the button symbols, so they are marked as placeholders here).

4. Press the main switch ([Button 1]) once to turn on the lamp (LED lights on), and press it again to turn off the lamp (LED lights off).

5. Use [Button 2] / [Button 3] to adjust the gradient intensity of a group of lights respectively (a total of six levels of intensity). To adjust the gradient intensity of a group of LED lights, press the corresponding +/- button. Press and hold the + button to adjust the LED lights to the maximum power, and press and hold the - button to adjust the LED lights to the minimum power.

6. When you turn off the lamp body and turn it on again, by default, the lamp body will maintain the state it was in before the last shutdown when restarted.



Front view



INSTRUCTIONS FOR PLACING THE PHONE (SIDE VIEW OF PHONE PLACEMENT)

1. Place the smartphone in the phone card slot as shown in the figure: With the help of the smartphone itself, press the top holder of the phone card slot to open it and insert the smartphone. Use left/right/up/down sliding to fix the position of the phone lens.
2. After placing the smartphone in the phone card slot, move the phone's camera lens to the middle position of the window.
3. You can use the millimeter scale on the back of the lamp body to help you adjust the height of the phone lens position.
4. Gently push the smartphone through the spring of the phone card slot to take it out (as shown in Image B).
5. Loosen the hex screw (do not remove it completely) to slide the phone card slot at the millimeter scale.
6. Tighten the hex screw.
7. Please check if the phone lens is in the middle position; if not, please retry from Step 3.

TIPS FOR DENTAL PHOTOGRAPHY

General Tips

- Try to zoom in and out of the image on the phone screen to clearly select the size of the image to shoot.
- Please place the device horizontally to shoot the teeth (horizontal cutting line).
- Shoot the focus point (touch the phone screen with your fingers to click the focus point to make the picture clearer).
- The shooting can be controlled by a remote control (a smartphone connected to Bluetooth for wireless operation).

FRONT TEETH Shooting Tips

- Keep 15-20cm away from the patient.
- Shoot in automatic mode in the basic smartphone application.
- Turn on the left and right side LED lights and optionally use a soft light sheet.
- When your lens is near/far from the photographed teeth, the color of the teeth on the screen changes as the smartphone adapts to the changing light. Therefore, when the screen shows the color most similar to what you see with your naked eye, you should take the image.

POSTERIOR TEETH Shooting Tips

- Keep 15-20cm away from the patient.
- Use retractors (Photocad) and mirrors if necessary.
- Turn on the middle LED light.
- Try to zoom in and out of the image on the phone screen to clearly select the size of the image to shoot.
- Shoot the focus point (touch the phone screen with your fingers to click the focus point to make the picture clearer).
- The camera can be controlled by a remote control (a smartphone connected to Bluetooth for wireless operation).

SAFETY INSTRUCTIONS

Do not use excessive force to operate this product, and follow the instructions below:

- Before use, ensure that the power adapter is compatible with the fill light; do not use non-original adapters to ensure safety.
- Avoid placing the fill light in a humid environment or in the rain to prevent damage.
- Do not disassemble or repair the fill light by yourself to avoid safety risks or damage to the device.
- Children should use this product under adult supervision to ensure safety.

MAINTENANCE

- After use, gently wipe the surface of the fill light with a soft cloth to keep it clean.
- When storing, avoid high temperature, humidity, and direct sunlight to extend the product life.
- Regularly check the power cord and adapter to ensure they are in good condition.